

Open Market Accommodation Schedule	Number	SQ FT	Bed	Total SQ Ft H&A	End	Det	Total
Alton	14	825	2	1150	0	14	14
Alton PCT	4	825	2	3300	0	4	4
Elmore	8	850	3	6800	0	8	8
Longford	12	850	3	10214	0	12	12
Orwell	7	947	3	6429	0	7	7
New Ashbourne LG	5	1036	3	5180	0	5	5
New Ashbourne LG PCT	3	1036	3	3108	0	3	3
New Water LG	9	1116	3	10044	0	9	9
Flax	3	1039	3	3117	0	3	3
Fox PCT	10	1053	3	10530	0	10	10
Flax PCT	5	1075	3	5375	0	5	5
Ashby PCT	3	1075	3	3225	0	3	3
Lymington LG	16	1345	4	19920	0	16	16
Norman	1	1242	4	1242	0	1	1
Bosman PCT	6	1242	4	7572	0	6	6
Total	106			19938			106

Nett Area (Acres)	7.27
Coverage (SQFT/Acre)	1994.81
Density (Units Per Acre)	14.58

Affordable Accommodation Schedule	Number	SQ FT	Bed	Total SQ Ft H&A	End	Det	Total
Region A	10	417	1	4170	0	10	10
Region B	10	311	1	3110	0	10	10
Inval	33	442	2	21846	11	22	33
Winnor	17	850	3	14450	0	17	17
Grantham	5	850	3	4250	0	5	5
Dis	4	1062	4	4248	0	4	4
Total	79			54874			79

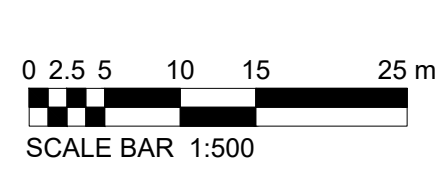
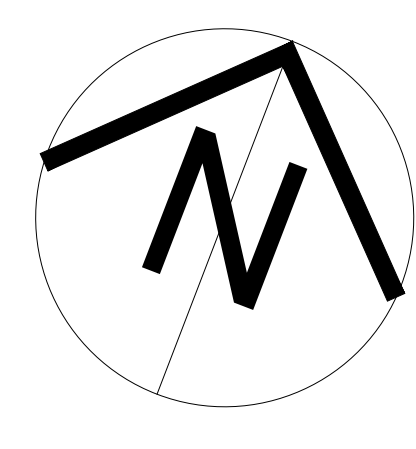
Nett Area (Acres)	3.59
Coverage (SQFT/Acre)	15462.40
Density (Units Per Acre)	23.61

Design and Build Accommodation Schedule	Number	SQ FT	Bed	Total SQ Ft H&A	End	Det	Total
Winnor	20	850	3	20050	0	20	20
Grantham	2	850	3	1700	0	2	2
Dis	8	1062	4	8496	0	8	8
Total	40			36446			40

Nett Area (Acres)	2.13
Coverage (SQFT/Acre)	14917.54
Density (Units Per Acre)	18.94

Totals	225	19938	225
Total SQFT	19938		
Nett Area (Acres)	12.97		
Coverage (SQFT/Acre)	15278.87		
Density (Units Per Acre)	17.35		
POS Area (Acres)	16.61		

SITE DATA	
TENURE	RPS / DM / AFP
SECURED BY DESIGN	TBC
BUILDING REGULATIONS	2013
CODE FOR SUSTAINABLE HOMES	N/A
ACOUSTIC REQUIREMENTS	10A
OTHER	-



- LEGEND**
- DENOTES RAISED TABLE SURFACE
 - EASEMENT
 - PROPOSED BLOCK PAVING
 - 1800mm HIGH BRICK WALL. SEE NSD 9001 TYPE 1.
 - 1800mm HIGH CLOSE BOARD FENCE. SEE NSD 9102 TYPE A (TIMBERS TO COMPLY WITH BS5838 WHERE NOTED).
 - 2100mm HIGH CLOSE BOARD FENCE. SEE NSD 9102 TYPE A (TIMBERS TO COMPLY WITH BS5838 WHERE NOTED).
 - 1100 - 1500mm HIGH HOOPED TOP METAL RAILING. SEE NSD 9002 & NOTE ON LAYOUT.
 - Knee Rail
 - 1800mm HIGH CLOSE BOARDED GATE. SLAM TO LOCK WITH ACCESS KEY GATES MARKED WITH AN * TO BE SLAM TO LOCK WITH COMBINAL ACCESS KEY. UNDERPASS GATES TO BE METAL AS PER WORKING DRAWINGS.
 - FRONT ENTRANCE DOOR. ALL DOORS TO HAVE FLUSH THRESHOLD PLATFORM AT ENTRANCE TO DWELLING.
 - FRENCH DOORS
 - GARAGE PERSONNEL DOORS
 - GARAGE DOORS
 - DENOTES PLOTS WITH GABLE WINDOWS OMITTED
 - CLADDING
 - DENOTES PLOTS WITH WINDOWS REQUIRING ACOUSTIC GLAZING
 - DENOTES PLOTS WITH FEATURE ROOF TILE BANDING.
 - GAS AND ELECTRIC METER POSITIONS
 - PATIO / FRENCH DOORS
 - TREES TO BE RETAINED (REFER TO TREE SURVEY).
 - ROOT PROTECTION AREA (REFER TO TREE SURVEY FOR RADIUS).
 - TREES TO BE REMOVED (REFER TO TREE SURVEY).
 - MINESHAFT STANDOFF
 - INDICATIVE LANDSCAPING
 - BIN COLLECTION POINT
- BUILDING REGULATIONS**
- NO GLAZING EXCEEDING 1M TO BE INCLUDED TO ELEVATIONS WITHIN 1M OF THE BOUNDARY.
 - NO TWO FACING BOILER FLUES ARE TO DISCHARGE WITHIN 1.2M OF EACH OTHER.
- NOTES**
- PATHS GENERALLY TO BE 900mm WIDE.
 - PATIOS GENERALLY TO BE 2700 x 1800mm UNLESS INDICATED OTHERWISE.
 - PAVING SLABS TO BE OFFSET 10mm WHERE FOOTPATH OR PATIO IS ADJACENT TO DWELLING.
 - MOWING STRIP TO BE PROVIDED WHERE TURFED AREAS ADJACENT TO HOUSE. TO CONSIST OF 150mm WIDE GOLDEN (BUFF) STONE CHIPPINGS.
 - GROUND LEVEL ADJACENT TO HOUSE TO BE 150mm BELOW D.S.L. UNLESS OTHERWISE NOTED.
- MATERIAL REFERENCE**
- 6.0 - BRICK
 - 6.1 - BRICK / RENDER
 - 6.2 - BRICK / TILE HANGING



1	18.08.20	14	Issue 01 - Initial Design
2	18.08.20	14	Issue 02 - Final Design
3	18.08.20	14	Issue 03 - Final Design
4	18.08.20	14	Issue 04 - Final Design
5	18.08.20	14	Issue 05 - Final Design
6	18.08.20	14	Issue 06 - Final Design
7	18.08.20	14	Issue 07 - Final Design
8	18.08.20	14	Issue 08 - Final Design
9	18.08.20	14	Issue 09 - Final Design
10	18.08.20	14	Issue 10 - Final Design
11	18.08.20	14	Issue 11 - Final Design
12	18.08.20	14	Issue 12 - Final Design
13	18.08.20	14	Issue 13 - Final Design
14	18.08.20	14	Issue 14 - Final Design
15	18.08.20	14	Issue 15 - Final Design
16	18.08.20	14	Issue 16 - Final Design
17	18.08.20	14	Issue 17 - Final Design
18	18.08.20	14	Issue 18 - Final Design
19	18.08.20	14	Issue 19 - Final Design
20	18.08.20	14	Issue 20 - Final Design
21	18.08.20	14	Issue 21 - Final Design
22	18.08.20	14	Issue 22 - Final Design
23	18.08.20	14	Issue 23 - Final Design
24	18.08.20	14	Issue 24 - Final Design
25	18.08.20	14	Issue 25 - Final Design
26	18.08.20	14	Issue 26 - Final Design
27	18.08.20	14	Issue 27 - Final Design
28	18.08.20	14	Issue 28 - Final Design
29	18.08.20	14	Issue 29 - Final Design
30	18.08.20	14	Issue 30 - Final Design
31	18.08.20	14	Issue 31 - Final Design
32	18.08.20	14	Issue 32 - Final Design
33	18.08.20	14	Issue 33 - Final Design
34	18.08.20	14	Issue 34 - Final Design
35	18.08.20	14	Issue 35 - Final Design
36	18.08.20	14	Issue 36 - Final Design
37	18.08.20	14	Issue 37 - Final Design
38	18.08.20	14	Issue 38 - Final Design
39	18.08.20	14	Issue 39 - Final Design
40	18.08.20	14	Issue 40 - Final Design
41	18.08.20	14	Issue 41 - Final Design
42	18.08.20	14	Issue 42 - Final Design
43	18.08.20	14	Issue 43 - Final Design
44	18.08.20	14	Issue 44 - Final Design
45	18.08.20	14	Issue 45 - Final Design
46	18.08.20	14	Issue 46 - Final Design
47	18.08.20	14	Issue 47 - Final Design
48	18.08.20	14	Issue 48 - Final Design
49	18.08.20	14	Issue 49 - Final Design
50	18.08.20	14	Issue 50 - Final Design

COUNTRYSIDE
Places People Love

Manor Woods
Off West Fields
Kirkbymoorside

Planning Layout

Scale: 1:500
Date: 19.11.19
Drawing No: SKY002-PL-01
Sheet 1 of 1