



I.P.I.

INDEPENDENT PLAYGROUND INSPECTIONS LIMITED

9 THE BAULK, WORKSOP, NOTTS, S81 0HU

TEL: 01909 484847

MOBILE: 07970 925898

EMAILS: gary.ipiplay@gmail.com

sue.ipiplay@gmail.com

Annual inspection report

for

Kirkbymoorside Town Council play areas at

Old Road, Kirkbymoorside, York, YO62 6LT &

Ryedale View, Kirkbymoorside, York, YO62 6EH

carried out on behalf of

Streetscape (Products & Services) Ltd

Signed *G Watkinson*

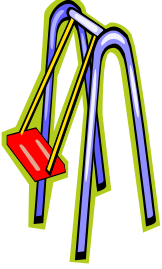
Register of Play Inspectors

International Certificate No. 1041A

13th June 2024

Gary Watkinson

I.P.I



OLD ROAD



Site address:-

Old Road, Kirkbymoorside, York, YO62 6LT

Date of inspection:-

13/6/2024

Inspected by:

Gary Watkinson
RPII Certificate No 1041A



OLD ROAD

1. Sovereign Multi Climbing Frame

Condition: No defects were found

Compliance: Complies with BS EN 1176

Surfacing: Grass Mats

Surface Condition: Satisfactory

Surface Compliance: BS EN 1176-1, Sec. 4.2.14, exposed foundations at sliding pole – requires attention

Low Risk: 7



(Exposed foundations at sliding pole)

2. Sutcliffe Large Spinning Bowl

Condition: Replace three broken studs on ground fixing

Compliance: Complies with BS EN 1176

Surfacing: Grass Mats

Surface Condition: Satisfactory

Surface Compliance: Meets the dimensional requirements of BS EN 1176

Low Risk: 4



(Broken studs at ground fixing)

OLD ROAD

3. Richter Embankment Slide

Condition: Supports showing signs of rotting – monitor

Compliance: Complies with BS EN 1176

Surfacing: Grass Mats

Surface Condition: Satisfactory

Surface Compliance: Meets the dimensional requirements of BS EN 1176

Very Low Risk: 2



4. Ledon Spring Bike

Condition: No defects were found

Compliance: BS EN 1176-6, Sec. 4.6, foot rests fail gauge test

Surfacing: Tiles & Grass

Surface Condition: Potential trip hazards at edges of tiles – requires attention (Medium Risk)

Surface Compliance: Meets the dimensional requirements of BS EN 1176

Very Low Risk: 3



(Potential trip hazards at edges of tiles)

OLD ROAD

5. Playdale 1.75m 1 Bay Swing with 2 Cradle Seats

Condition: One support showing signs of rotting – monitor

Compliance: Complies with BS EN 1176

Surfacing: Green Fleck Wet Pour with Inserts

Surface Condition: Satisfactory

Surface Compliance: Meets the dimensional requirements of BS EN 1176

Very Low Risk: 2



(Rotting support)

6. Playdale Toddler Multi Unit

Condition: Replace several broken bolt cover caps

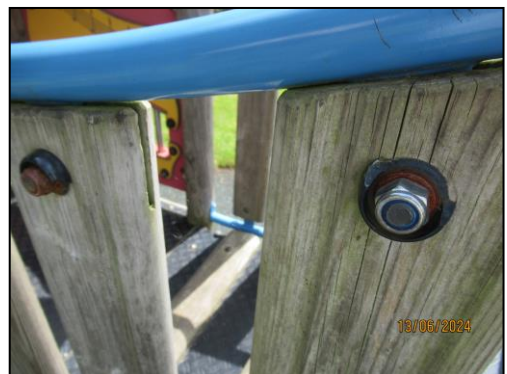
Compliance: Complies with BS EN 1176

Surfacing: Green Fleck Wet Pour with Inserts

Surface Condition: Satisfactory

Surface Compliance: Meets the dimensional requirements of BS EN 1176

Low Risk: 4



(Broken bolt cover caps)

OLD ROAD

7. Playdale Overhead Rota

Condition: No defects were found

Compliance: Complies with BS EN 1176

Surfacing: Green Fleck Wet Pour

Surface Condition: Satisfactory

Surface Compliance: Meets the dimensional requirements of BS EN 1176

Low Risk: 6



8. Playdale Group Swing

Condition: Replace three missing bolt cover caps beneath seat

Compliance: BS EN 1176-1, Sec. 4.2.5, excess bolt thread present at missing bolt cover caps beneath seat

Surfacing: Black Wet Pour

Surface Condition: Repair 200mm x 100mm x 10mm deep

Surface Compliance: Meets the dimensional requirements of BS EN 1176

Low Risk: 7



(Missing bolt cover caps beneath seat)



(Damaged wet pour)

9. Sovereign 2.45m 1 Bay Swing with 2 Flat Seats

Condition: No defects were found

Compliance: Complies with BS EN 1176

Surfacing: Grass Mats

Surface Condition: Satisfactory

Surface Compliance: Meets the dimensional requirements of BS EN 1176

Low Risk: 4



OLD ROAD

10. Unknown Make Ball Chute

Condition: No defects were found

Compliance: Complies with BS EN 15312

Surfacing: Artificial Turf

Surface Condition: Satisfactory

Low Risk: 4



11. Sure Shot Basketball

Condition: No defects were found

Compliance: Complies with BS EN 15312

Surfacing: Artificial Turf

Surface Condition: Satisfactory

Medium Risk: 8



12. Unknown Make Target Panel

Condition: Replace four missing bolts on back board

Compliance: Complies with BS EN 15312

Surfacing: Artificial Turf

Surface Condition: Satisfactory

Low Risk: 4



(Missing bolts on back board)

OLD ROAD

13. Playdale Log & Net Climber

Condition: No defects were found

Compliance: Complies with BS EN 1176

Surfacing: Wood Chippings & Bark

Surface Condition: Require top up (actually 180mm deep, should be at least 300mm)

Surface Compliance: Meets the dimensional requirements of BS EN 1176

Low Risk: 6



(Wood chippings 180mm deep)

14. Playdale Trim Trail

Condition: Replace one rotten step post

Replace one rotten post on weave beam

Replace one rotten post on net climber

Replace all rotten posts on Burma bridge

Compliance: Complies with BS EN 1176

Comments: Given age of items suspect rotten supports will occur on future annual inspections – consideration should be given to replacing whole trim trail

Surfacing: Grass

Surface Condition: Satisfactory

Surface Compliance: Meets the requirements of BS EN 1176

Low Risk: 6



(Rotten step post)



(Rotten post on weave beam)

OLD ROAD

14. Playdale Trim Trail (continued)



(Rotten post on net climber)



(Location of rotten post on net climber)



(Rotten post on Burma bridge)

15. Eight-item Skate Park

Condition: Slight damage to three liners on half pipe combi unit – monitor

Slight damage to one liner on driveway – monitor

Resecure one liner on driveway

Repair/replace one damaged liner on half pipe combi unit

Compliance: BS EN 14974, Sec. 6.1.7, rivets protruding beneath platforms & ramps at various locations – requires attention

High Risk: 16



(Loose liner on driveway)



(Location of loose liner on driveway)

OLD ROAD

15. Eight-item Skate Park (continued)



(Slight damage to liner on half pipe combi unit)



(Damaged liner on half pipe combi unit)



(Protruding rivets)

Ancillary items/Comments:

Picnic Tables x three – satisfactory (**Very Low Risk**)

Seats x seven – satisfactory (**Very Low Risk**)

Litter Bins x five – satisfactory (**Very Low Risk**)

Signs – **remove sign from gate (recommend signs are not put on gates) (Low Risk)**

Fence (around items 4-6) c/w one pedestrian gate – potential neck trap between slats. Posts showing signs of rotting – **monitor. Replace missing buffer on gate (Low Risk)**

Fence (around skate park) c/w 4 pedestrian gates – potential head trap between top two rails on fence & gates. **Clearance of between 60mm & 110mm should be maintained at bottom of gates. Replace one missing gate stop. Re-set gates (catches missing stoppers at two gates. Resecure one bracket on gate (Low Risk) Remove excess bolt thread. Replace two missing nuts on bolts (Medium Risk)**

Only one pedestrian entrance around items 4-6 (**Medium Risk**)

Boundary wall fence not inspected

One pedestrian gate & one vehicular access gate to main area – satisfactory (**Very Low Risk**)

Path – **poor condition – requires attention (Low Risk)**

General area – good condition. Tidy

HIGH RISK SITE

OLD ROAD

Ancillary items/Comments (continued)



(Missing buffer at gate to play area)



(Missing gate stop at gate to play area)



(Excess bolt thread at gate to skate park)



(Missing nut on bolt at gate to skate park)



(Loose bracket at gate to skate park)



(Location of loose bracket at gate to skate park)

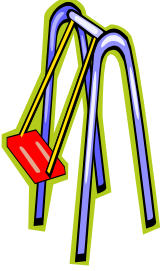


(Poor condition path)



(Poor condition path)

I.P.I



RYEDALE VIEW



Site address:-

Ryedale View, Kirkbymoorside, York, YO62 6EH

Date of inspection:-

13/6/2024

Inspected by:

Gary Watkinson
RPII Certificate No 1041A



1. Kompan Junior Multi Unit

Condition: Slide requires cleaning due to bird fouling

Compliance: Complies with BS EN 1176

Surfacing: Grass Mats

Surface Condition: Satisfactory

Surface Compliance: Meets the dimensional requirements of BS EN 1176

Low Risk: 7



RYEDALE VIEW

2. Kompan Daisy Swing

Condition: No defects were found

Compliance: Complies with BS EN 1176

Surfacing: Grass Mats

Surface Condition: Repair/replace one damaged mat

Surface Compliance: Meets the dimensional requirements of BS EN 1176

Low Risk: 4



(Damaged grass mat)

3. Kompan Multi Climbing Frame

Condition: No defects were found

Compliance: BS EN 1176-1, Sec. 4.2.7.6, potential finger trap between top of climbing wall & platform

Surfacing: Grass Mats

Surface Condition: Satisfactory

Surface Compliance: Meets the dimensional requirements of BS EN 1176

Low Risk: 7



4. Kompan Pirouette

Condition: No defects were found

Compliance: Complies with BS EN 1176

Surfacing: Grass Mats

Surface Condition: Satisfactory

Surface Compliance: Meets the dimensional requirements of BS EN 1176

Low Risk: 4



RYEDALE VIEW

5. Kompan Spinning Bowl

Condition: No defects were found

Compliance: Complies with BS EN 1176

Surfacing: Grass Mats

Surface Condition: Satisfactory

Surface Compliance: Meets the dimensional requirements of BS EN 1176

Very Low Risk: 2



6. Kompan 2.4m 1 Bay Swing with 2 Flat Seats

Condition: No defects were found

Compliance: Complies with BS EN 1176

Surfacing: Grass Mats

Surface Condition: Grass worn (this may affect the impact attenuating properties of the mats)

Surface Compliance: Meets the dimensional requirements of BS EN 1176

Low Risk: 6



7. Bespoke Woodland Walk consisting of:

a) Post

Condition: Not ideally positioned beneath tree
Cut back shrubs (Low Risk)



b) Information Panel

Condition: Not ideally positioned beneath tree



RYEDALE VIEW

7. Bespoke Woodland Walk consisting of:

c) Board Walk

Condition: Not ideally positioned beneath tree
Cut back brambles (Low Risk)

Low Risk: 4 (items a-c)



Ancillary items/Comments:

Picnic Tables x two – satisfactory (**Very Low Risk**)

Seats x two – satisfactory (**Very Low Risk**)

Litter Bins x two – satisfactory (**Very Low Risk**)

Signs – satisfactory (**Very Low Risk**)

No fence provided

Path – **poor condition (possibly due to tree roots) – requires attention (Low Risk)**

Other Features: Site subject to bird fouling (**Medium Risk**)

General area – good condition. Tidy

MEDIUM RISK SITE



(Poor condition path)



I.P.I.

INDEPENDENT PLAYGROUND INSPECTIONS LIMITED

9 THE BAULK, WORKSOP, NOTTS, S81 0HU

TEL: 01909 484847

MOBILE: 07970 925898

EMAILS: gary.ipiplay@gmail.com

sue.ipiplay@gmail.com

4 July 2024

Joanne Miller
Streetscape (Products & Services) Ltd
Raleigh Works
Vivars Way
Canal Road
Selby
North Yorkshire
YO8 8BE

Dear Joanne

Please find attached the annual inspection and level of risk report for Kirkbymoorside Town Council's play areas at Old Road and Ryedale View.

A copy of the RPII inspection scope is also attached.

When minor wear/damage has been identified, the recommended action is to monitor.

Maintenance issues that could be routinely rectified have been identified in red print to aid identification.

I trust that you will find the report satisfactory, but if you have any queries then please don't hesitate to contact me.

Yours sincerely

G Watkinson

Gary Watkinson
Playground Safety Consultant
Member of the Register of Play Inspectors International Ltd (RPII)