



I.P.I.

INDEPENDENT PLAYGROUND INSPECTIONS LIMITED

9 THE BAULK, WORKSOP, NOTTS, S81 0HU

TEL: 01909 484847

MOBILE: 07970 925898

EMAILS: gary.ipiplay@gmail.com

sue.ipiplay@gmail.com

Annual inspection report

for

Kirkbymoorside Town Council play areas at

Old Road, Kirkbymoorside, York, YO62 6LT &

Ryedale View, Kirkbymoorside, York, YO62 6EH

carried out on behalf of

Streetscape (Products & Services) Ltd

Signed *G Watkinson*

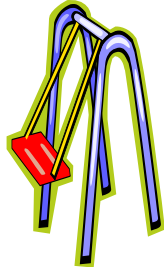
Register of Play Inspectors

International Certificate No. 1041A

10th June 2025

Gary Watkinson

I.P.I



OLD ROAD



Site address:-

Old Road, Kirkbymoorside, York, YO62 6LT

Date of inspection:-

10/6/2025

Inspected by:

**Gary Watkinson
RPiI Certificate No 1041A**



OLD ROAD

1. Sovereign Multi Climbing Frame

Condition: No defects were found

Compliance: Complies with BS EN 1176

Surfacing: Grass Mats

Surface Condition: Satisfactory

Surface Compliance: Meets the dimensional requirements of BS EN 1176

Low Risk: 5



2. Sutcliffe Large Spinning Bowl

Condition: Replace three broken studs on ground fixing

Compliance: Complies with BS EN 1176

Surfacing: Grass Mats

Surface Condition: Satisfactory

Surface Compliance: Meets the dimensional requirements of BS EN 1176

Low Risk: 4



(Broken studs at ground fixing)

3. Richter Embankment Slide

Condition: Supports showing signs of rotting – monitor

Compliance: Complies with BS EN 1176

Surfacing: Grass Mats

Surface Condition: Satisfactory

Surface Compliance: Meets the dimensional requirements of BS EN 1176

Very Low Risk: 2



OLD ROAD

4. Ledon Spring Bike

Condition: No defects were found

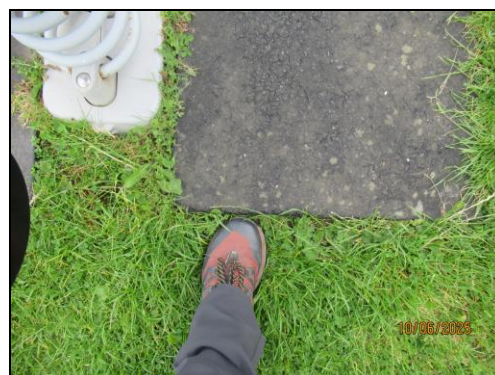
Compliance: BS EN 1176-6, Sec. 4.6, foot rests fail gauge test

Surfacing: Tiles & Grass

Surface Condition: Potential trip hazards at edges of tiles – requires attention (Medium Risk)

Surface Compliance: Meets the dimensional requirements of BS EN 1176

Very Low Risk: 3



(Potential trip hazards at edges of tiles)

5. Playdale 1.75m 1 Bay Swing with 2 Cradle Seats

Condition: One support showing signs of rotting – monitor

Compliance: Complies with BS EN 1176

Surfacing: Green Fleck Wet Pour with Inserts

Surface Condition: Satisfactory

Surface Compliance: Meets the dimensional requirements of BS EN 1176

Very Low Risk: 2



(Location of rotting support)

OLD ROAD

6. Playdale Toddler Multi Unit

Condition: Replace several broken bolt cover caps

Compliance: Complies with BS EN 1176

Surfacing: Green Fleck Wet Pour with Inserts

Surface Condition: Satisfactory

Surface Compliance: Meets the dimensional requirements of BS EN 1176

Low Risk: 4



7. Playdale Overhead Rota

Condition: No defects were found

Compliance: Complies with BS EN 1176

Surfacing: Green Fleck Wet Pour

Surface Condition: Satisfactory

Surface Compliance: Meets the dimensional requirements of BS EN 1176

Low Risk: 6



8. Playdale Group Swing

Condition: Replace four missing bolt cover caps beneath seat

Compliance: BS EN 1176-1, Sec. 4.2.5, excess bolt thread present at missing bolt cover caps beneath seat

Surfacing: Black Wet Pour

Surface Condition: Satisfactory

Surface Compliance: Meets the dimensional requirements of BS EN 1176

Low Risk: 7



9. Sovereign 2.45m 1 Bay Swing with 2 Flat Seats

Condition: No defects were found

Compliance: Complies with BS EN 1176

Surfacing: Grass Mats

Surface Condition: Satisfactory

Surface Compliance: Meets the dimensional requirements of BS EN 1176

Low Risk: 4



OLD ROAD

10. Unknown Make Ball Chute

Condition: No defects were found

Compliance: Complies with BS EN 15312

Surfacing: Artificial Turf

Surface Condition: Satisfactory

Low Risk: 4



11. Sure Shot Basketball

Condition: No defects were found

Compliance: Complies with BS EN 15312

Surfacing: Artificial Turf

Surface Condition: Satisfactory

Medium Risk: 8



12. Unknown Make Target Panel

Condition: Replace six missing bolts on back board

Compliance: Complies with BS EN 15312

Surfacing: Artificial Turf

Surface Condition: Satisfactory

Low Risk: 4



(Missing bolts on back board)

OLD ROAD

13. Playdale Log & Net Climber

Condition: No defects were found

Compliance: Complies with BS EN 1176

Surfacing: Wood Chippings & Bark

Surface Condition: Satisfactory

Surface Compliance: Meets the dimensional requirements of BS EN 1176

Low Risk: 5



14. Playdale Trim Trail

Condition: Replace one rotten step post

Replace one rotten post on weave beam

Replace one rotten post on net climber

Replace all rotten posts on Burma bridge

Compliance: Complies with BS EN 1176

Comments: Given age of items suspect rotten supports will occur on future annual inspections – consideration should be given to replacing whole trim trail

Surfacing: Grass

Surface Condition: Satisfactory

Surface Compliance: Meets the requirements of BS EN 1176

Low Risk: 6



(Rotten step post)



(Rotten post on weave beam)



(Location of rotten post on net climber)

OLD ROAD

15. Eight-item Skate Park

Condition: Slight damage to three liners on half pipe combi unit – monitor

Slight damage to one liner on driveway – monitor

Resecure one liner on driveway

Repair/replace one damaged liner on half pipe combi unit

Compliance: BS EN 14974, Sec. 6.1.7, rivets protruding beneath platforms & ramps at various locations – requires attention

High Risk: 16



(Loose liner on driveway)



(Damaged liner on half pipe combi unit)

Ancillary items/Comments:

Picnic Tables x three – satisfactory (**Very Low Risk**)

Seats x seven – satisfactory (**Very Low Risk**)

Litter Bins x five – satisfactory (**Very Low Risk**)

Signs – **remove sign from gate (recommend signs are not put on gates) (Low Risk)**

Fence (around items 4-6) c/w one pedestrian gate – potential neck trap between slats. Posts showing signs of rotting – monitor. **Replace missing buffer on gate (Low Risk)**

Fence (around skate park) c/w 4 pedestrian gates – potential head trap between top two rails on fence & gates. **Clearance of between 60mm & 110mm should be maintained at bottom of gates. Replace one missing gate stop. Re-set gates (catches missing stoppers at two gates. (Low Risk) Remove excess bolt thread. Replace two missing nuts on bolts (Medium Risk)**

Only one pedestrian entrance around items 4-6 (**Medium Risk**)

Boundary wall fence not inspected

One pedestrian gate & one vehicular access gate to main area – satisfactory (**Very Low Risk**)

Path – **poor condition – requires attention (Low Risk)**

General area – good condition. Tidy

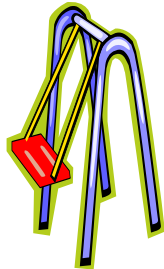
HIGH RISK SITE

OLD ROAD

Ancillary items/Comments (continued)



(Missing gate stop at gate to play area)



RYEDALE VIEW



Site address:-

Ryedale View, Kirkbymoorside, York, YO62 6EH

Date of inspection:-

10/6/2025

Inspected by:

**Gary Watkinson
RPii Certificate No 1041A**



1. Kompan Junior Multi Unit

Condition: No defects were found

Compliance: Complies with BS EN 1176

Surfacing: Grass Mats

Surface Condition: Satisfactory

Surface Compliance: Meets the dimensional requirements of BS EN 1176

Low Risk: 7



RYEDALE VIEW

2. Kompan Daisy Swing

Condition: No defects were found

Compliance: Complies with BS EN 1176

Surfacing: Grass Mats

Surface Condition: Repair/replace one damaged mat

Surface Compliance: Meets the dimensional requirements of BS EN 1176

Low Risk: 4



(Damaged grass mat)

3. Kompan Multi Climbing Frame

Condition: No defects were found

Compliance: BS EN 1176-1, Sec. 4.2.7.6, potential finger trap between top of climbing wall & platform

Surfacing: Grass Mats

Surface Condition: Satisfactory

Surface Compliance: Meets the dimensional requirements of BS EN 1176

Low Risk: 7



4. Kompan Pirouette

Condition: No defects were found

Compliance: Complies with BS EN 1176

Surfacing: Grass Mats

Surface Condition: Satisfactory

Surface Compliance: Meets the dimensional requirements of BS EN 1176

Low Risk: 4



RYEDALE VIEW

5. Kompan Spinning Bowl

Condition: No defects were found

Compliance: Complies with BS EN 1176

Surfacing: Grass Mats

Surface Condition: Satisfactory

Surface Compliance: Meets the dimensional requirements of BS EN 1176

Very Low Risk: 2



6. Kompan 2.4m 1 Bay Swing with 2 Flat Seats

Condition: No defects were found

Compliance: Complies with BS EN 1176

Surfacing: Grass Mats

Surface Condition: Grass worn (this may affect the impact attenuating properties of the mats)

Surface Compliance: Meets the dimensional requirements of BS EN 1176

Low Risk: 6



7. Bespoke Woodland Walk consisting of:

a) Post

Condition: Not ideally positioned beneath tree



b) Information Panel

Condition: Not ideally positioned beneath tree



RYEDALE VIEW

7. Bespoke Woodland Walk consisting of:

c) Board Walk

Condition: Not ideally positioned beneath tree

Low Risk: 4 (items a-c)

Ancillary items/Comments:

Picnic Tables x two – satisfactory (Very Low Risk)

Seats x two – satisfactory (Very Low Risk)

Litter Bins x two – satisfactory (Very Low Risk)

Signs – satisfactory (Very Low Risk)

No fence provided

Path – poor condition (possibly due to tree roots) – requires attention (Low Risk)

General area – good condition. Tidy

LOW RISK SITE

LEVEL OF RISK

The risk score is based on the following:

SEVERITY

Very minor injury	1
Injury possibly requiring minor medical attention	1-2
More significant injury, possibly requiring time off school/work	2-3
Serious injury with long term consequences	3-4
Death or major disability	4-5

LIKELIHOOD

Little likelihood	1
Fairly low likelihood	1-2
Low to medium likelihood	2-3
Medium to high likelihood	3-4
Very high likelihood	4-5

SEVERITY x LIKELIHOOD = RISK

N.B. The overall site risk is based on the highest risk factor

Risk Score	Risk Category	Action
1-3	Very low risk	Monitor
4-7	Low risk	Monitor and take reasonable practical action if required
8-12	Medium risk	Take action to reduce if possible, or available
13-20	High risk	Take action as soon as possible to implement control measures or modifications
21+	Unacceptable risk	Remove or immobilise immediately before taking immediate action, control measures or modifications and re-assessment on completion

RECOMMENDATIONS

Where there is practical and economical action available to reduce the risk score this action should be taken. High risk that cannot be further reduced may be acceptable where there is high developmental value to the child associated with that item of equipment. Where high risk can be reduced, immediate action should be taken to reduce this risk to an acceptable level.

Unacceptable risk is what it says – unacceptable. **Immediate** action should be taken to remove or immobilise the item until control measures have been taken to reduce the risk to an appropriate level.



I.P.I.

INDEPENDENT PLAYGROUND INSPECTIONS LIMITED

9 THE BAULK, WORKSOP, NOTTS, S81 0HU

TEL: 01909 484847

MOBILE: 07970 925898

EMAILS: gary.ipiplay@gmail.com

sue.ipiplay@gmail.com

26 June 2025

Joanne Miller
Streetscape (Products & Services) Ltd
Raleigh Works
Vivars Way
Canal Road
Selby
North Yorkshire
YO8 8BE

Dear Joanne

Please find attached the annual inspection and level of risk report for Kirkbymoorside Town Council's play areas at Old Road and Ryedale View.

A copy of the RPII inspection scope is also attached.

When minor wear/damage has been identified, the recommended action is to monitor.

Maintenance issues that could be routinely rectified have been identified in red print to aid identification.

I trust that you will find the report satisfactory, but if you have any queries then please don't hesitate to contact me.

Yours sincerely

G Watkinson

Gary Watkinson
Playground Safety Consultant
Member of the Register of Play Inspectors International Ltd (RPII)