



# I.P.I.

INDEPENDENT PLAYGROUND INSPECTIONS LIMITED

9 THE BAULK, WORKSOP, NOTTS, S81 0HU

TEL: 01909 484847

MOBILE: 07970 925898

EMAILS: [gary.ipiplay@gmail.com](mailto:gary.ipiplay@gmail.com)

[sue.ipiplay@gmail.com](mailto:sue.ipiplay@gmail.com)

Annual inspection report

for

Kirkbymoorside Town Council play areas at

Old Road, Kirkbymoorside, York, YO62 6LT &

Ryedale View, Kirkbymoorside, York, YO62 6EH

carried out on behalf of

Streetscape (Products & Services) Ltd

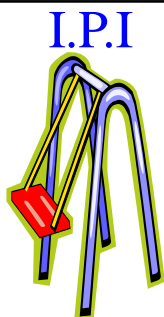
Signed *G Watkinson*

Register of Play Inspectors

International Certificate No. 1041A

27<sup>th</sup> July 2020

Gary Watkinson



## OLD ROAD



Site address:-

Old Road, Kirkbymoorside, York, YO62 6LT

Date of inspection:-

27/7/2020

Inspected by:

Gary Watkinson

RPiI Certificate No 1041A



### 1. Sutcliffe Large Spinning Bowl

**Condition:** No defects were found

**Compliance:** Complies with BS EN 1176

**Surfacing:** Grass Mats

**Surface Condition:** Satisfactory

**Surface Compliance:** Meets the dimensional requirements of BS EN1176

**Low Risk: 4**



## OLD ROAD

### 2. Richter Embankment Slide

**Condition:** No defects were found

**Compliance:** Complies with BS EN 1176

**Surfacing:** Grass Mats

**Surface Condition:** Satisfactory

**Surface Compliance:** Meets the dimensional requirements of BS EN1176

**Very Low Risk: 2**



### 3. Ledon Spring Bike

**Condition:** No defects were found

**Compliance:** Fails BS EN 1176-6, Sec. 4.6, foot rests fail gauge test

**Surfacing:** Tiles & Grass

**Surface Condition:** Satisfactory

**Surface Compliance:** Meets the dimensional requirements of BS EN 1176

**Very Low Risk: 3**



(Footrests fail gauge test)

### 4. Playdale 1.75m 1 Bay Swing with 2 Cradle Seats

**Condition:** No defects were found

**Compliance:** Complies with BS EN 1176

**Surfacing:** Green Fleck Wet Pour with Inserts

**Surface Condition:** Satisfactory

**Surface Compliance:** Meets the dimensional requirements of BS EN 1176

**Very Low Risk: 2**





## OLD ROAD

### 5. Playdale Toddler Multi Unit

**Condition:** Replace three broken bolt cover caps

**Compliance:** Complies with BS EN 1176

**Surfacing:** Green Fleck Wet Pour with Inserts

**Surface Condition:** Satisfactory

**Surface Compliance:** Meets the dimensional requirements of BS EN 1176

**Low Risk: 4**



(Broken bolt cover cap)

### 6. Richter Cantilever Swing

**Condition:** Beam damaged – monitor

One support showing signs of rotting – monitor

**Compliance:** Complies with BS EN 1176

**Surfacing:** Green Fleck Wet Pour

**Surface Condition:** Satisfactory

**Surface Compliance:** Meets the dimensional requirements of BS EN 1176

**Low Risk: 5**



(Rotting support)

## OLD ROAD

### 7. Richter 2.75m 1 Bay Swing with 2 Flat Seats

**Condition:** Splits in logs – monitor

**Compliance:** Complies with BS EN 1176

**Surfacing:** Black Wet Pour

**Surface Condition:** Satisfactory

**Surface Compliance:** Meets the dimensional requirements of BS EN1176

**Low Risk: 4**



---

### 8. Richter Log Climber

**Condition:** Splits in logs – monitor

**Compliance:** Complies with BS EN 1176

**Surfacing:** Grass

**Surface Condition:** Satisfactory

**Surface Compliance:** Meets the requirements of BS EN 1176

**Low Risk: 4**



---

### 9. Sure Shot Basketball

**Security fence erected – visual inspection only**

**Condition:** No defects were found

**Compliance:** Complies with BS EN 15312

**Surfacing:** Artificial Turf

**Surface Condition:** Satisfactory

**Medium Risk: 8**



## OLD ROAD

### 10. Three Tyre Springy/Rota items

**Condition:** No defects were found

**Compliance:** Complies with BS EN 1176

**Surfacing:** Grass Mats

**Surface Condition:** Repair/replace one damaged grass mat

**Surface Compliance:** Fails BS EN 1176-1, Sec. 4.2.14, exposed foundations at damaged grass mat

**Low Risk: 6**



(Exposed foundations at damaged grass mat)

---

### 11. Playdale Log & Net Climber

**Condition:** No defects were found

**Compliance:** Complies with BS EN 1176

**Surfacing:** Wood Chippings

**Surface Condition:** Satisfactory

**Surface Compliance:** Meets the dimensional requirements of BS EN 1176

**Low Risk: 4**





## OLD ROAD

### 12. Playdale Trim Trail

**Condition:** Wobble log showing signs of rotting – monitor  
**Replace two rotten step posts**

**Compliance:** Complies with BS EN 1176

**Surfacing:** Grass

**Surface Condition:** Satisfactory

**Surface Compliance:** Meets the requirements of BS EN 1176

**Low Risk: 4**



(Rotten step post)



(Rotten step post)

### 13. Eight-item Skate Park

**Condition:** Slight damage to two liners on half pipe combi unit – monitor

Slight damage to one liner on driveway – monitor

**Compliance:** Complies with BS EN 14974

**High Risk: 14**



# OLD ROAD

## Ancillary items/Comments:

Picnic Tables x three – satisfactory (**Very Low Risk**)

Seats x seven – satisfactory (**Very Low Risk**)

Litter Bins x five – satisfactory (**Very Low Risk**)

Signs – satisfactory (**Very Low Risk**)

Fence (around items 2-5) c/w one pedestrian gate – potential neck trap between slats. Posts showing signs of rotting – monitor (**Low Risk**) **Re-adjust self-closing device as gate closing too fast (closing in 3 seconds, should be at least 5 seconds)** (**Medium Risk**)

Fence (around skate park) c/w 4 pedestrian gates – potential head trap between top two rails on fence & gates. **Clearance of between 60mm & 110mm should be maintained at bottom of gates. Plastic mesh fence in poor condition – requires attention. Replace one broken rail & resecure others. (Low Risk) Remove excess thread on protruding bolts. Remove potential pinching/crushing hazard between gate & post at hinge side (a gap of at least 12mm should be maintained)** (**Medium Risk**)

Only one pedestrian entrance around items 2-5 (**Medium Risk**)

Boundary wall fence not inspected

One pedestrian gate & one vehicular access gate to main area – satisfactory (**Very Low Risk**)

Path satisfactory (**Very Low Risk**)

General area – **cut back low branches at path.** (**Medium Risk**) Tidy

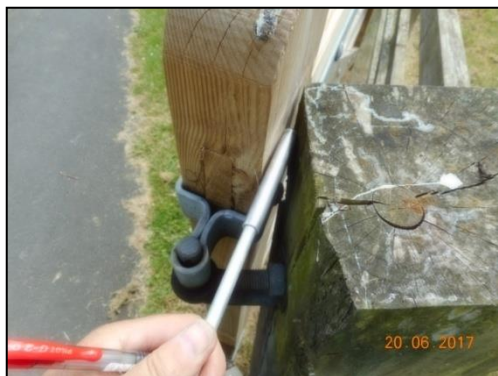
## HIGH RISK SITE



(Poor condition mesh fence)



(Broken fence rail)

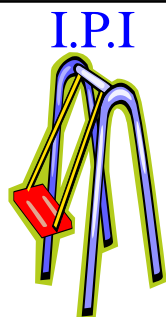


(Potential pinching/crushing hazard at gate – library photo)



(Overhanging branches at path)





## RYEDALE VIEW



Site address:-

**Ryedale View, Kirkbymoorside, York,  
YO62 6EH**

Date of inspection:-

**27/7/2020**

Inspected by:

**Gary Watkinson  
RPII Certificate No 1041A**



### 1. Kompan Junior Multi Unit

**Condition:** No defects were found

**Compliance:** Complies with BS EN 1176

**Surfacing:** Grass Mats

**Surface Condition:** Satisfactory

**Surface Compliance:** Meets the dimensional requirements of  
BS EN1176

**Low Risk: 7**



### 2. Kompan Daisy Swing

**Condition:** No defects were found

**Compliance:** Complies with BS EN 1176

**Surfacing:** Grass Mats

**Surface Condition:** Satisfactory

**Surface Compliance:** Meets the dimensional requirements of  
BS EN1176

**Low Risk: 4**



## RYEDALE VIEW

### 3. Kompan Multi Climbing Frame

**Condition:** No defects were found

**Compliance:** Fails BS EN 1176-1, Sec. 4.2.7.6, finger trap between top of climbing wall & platform

**Surfacing:** Grass Mats

**Surface Condition:** Satisfactory

**Surface Compliance:** Meets the dimensional requirements of BS EN1176

**Low Risk: 7**



(Potential finger trap)

---

### 4. Kompan Pirouette

**Condition:** No defects were found

**Compliance:** Complies with BS EN 1176

**Surfacing:** Grass Mats

**Surface Condition:** Satisfactory

**Surface Compliance:** Meets the dimensional requirements of BS EN 1176

**Low Risk: 4**



---

### 5. Kompan Spinning Bowl

**Condition:** No defects were found

**Compliance:** Complies with BS EN 1176

**Surfacing:** Grass Mats

**Surface Condition:** Satisfactory

**Surface Compliance:** Meets the dimensional requirements of BS EN 1176

**Very Low Risk: 2**





## RYEDALE VIEW

### 6. Kompan 2.4m 1 Bay Swing with 2 Flat Seats

**Condition:** No defects were found

**Compliance:** Complies with BS EN 1176

**Surfacing:** Grass Mats

**Surface Condition:** Satisfactory

**Surface Compliance:** Meets the dimensional requirements of BS EN 1176

**Low Risk: 4**



---

### 7. Bespoke Woodland Walk consisting of:

#### a) Post

**Condition:** Not ideally positioned beneath tree



---

#### b) Information Panel

**Condition:** Not ideally positioned beneath tree





## RYEDALE VIEW

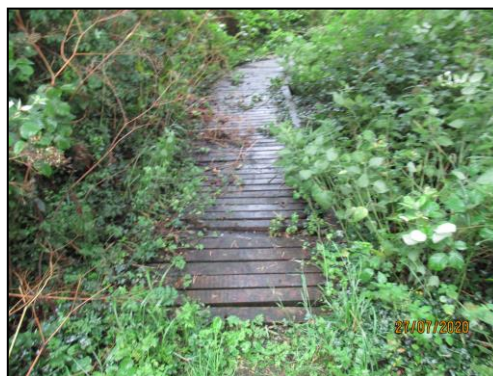
### 7. Bespoke Woodland Walk (continued)

#### c) Board Walk

**Condition:** Not ideally positioned beneath tree

**Replace two broken slats**

**Low Risk: 4 (items a-c)**



(Broken slat)

---

#### Ancillary items/Comments:

Picnic Tables x two – satisfactory (**Very Low Risk**)

Seat x one – **one post rotten – REMOVE FROM SERVICE** (**Medium Risk**)

Litter Bins x two – satisfactory (**Very Low Risk**)

Signs – satisfactory (**Very Low Risk**)

No fence provided

Path satisfactory (**Very Low Risk**)

General area – **cut back shrubs at woodland walk.** (**Low Risk**) Tidy

#### MEDIUM RISK SITE



(Rotten post at seat)



# I.P.I.

INDEPENDENT PLAYGROUND INSPECTIONS LIMITED

9 THE BAULK, WORKSOP, NOTTS, S81 0HU

TEL: 01909 484847

MOBILE: 07970 925898

EMAILS: [gary.ipiplay@gmail.com](mailto:gary.ipiplay@gmail.com)

[sue.ipiplay@gmail.com](mailto:sue.ipiplay@gmail.com)

7 August 2020

Joanne Miller  
Streetscape (Products & Services) Ltd  
Raleigh Works  
Vivars Way  
Canal Road  
Selby  
North Yorkshire  
YO8 8BE

Dear Joanne

Please find enclosed the annual inspection and level of risk report for Kirkbymoorside Town Council's play areas at Old Road and Ryedale View.

A copy of the RPII inspection methodology is also enclosed.

When minor wear/damage has been identified, the recommended action is to monitor.

Maintenance issues that could be routinely rectified have been identified in red print to aid identification.

It should be noted that the play areas have not been assessed for compliance with the Government's Covid-19 guidelines. None of the information contained in the report should be seen as suggesting that Covid-19 safety measures are satisfactory, or otherwise.

I trust that you will find the report satisfactory, but if you have any queries then please don't hesitate to contact me.

Yours sincerely

*G Watkinson*

Gary Watkinson  
Playground Safety Consultant  
Member of the Register of Play Inspectors International Ltd (RPII)