



I.P.I.

INDEPENDENT PLAYGROUND INSPECTIONS LIMITED

9 THE BAULK, WORKSOP, NOTTS, S81 0HU

TEL: 01909 484847

MOBILE: 07970 925898

EMAILS: gary.ipiplay@gmail.com

sue.ipiplay@gmail.com

Annual inspection report

for

Kirkbymoorside Town Council play areas at

Old Road, Kirkbymoorside, York, YO62 6LT &

Ryedale View, Kirkbymoorside, York, YO62 6EH

carried out on behalf of

Streetscape (Products & Services) Ltd

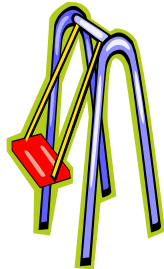
Signed *G Watkinson*

Register of Play Inspectors

International Certificate No. 1041A

21st July 2021

Gary Watkinson



OLD ROAD



Site address:-

Old Road, Kirkbymoorside, York, YO62 6LT

Date of inspection:-

21/7/2021

Inspected by:

Gary Watkinson

RPiI Certificate No 1041A



1. Sutcliffe Large Spinning Bowl

Condition: Replace three broken studs on ground fixing

Compliance: Complies with BS EN 1176

Surfacing: Grass Mats

Surface Condition: Satisfactory

Surface Compliance: Meets the dimensional requirements of BS EN1176

Low Risk: 4



Broken studs at ground fixing

OLD ROAD

2. Richter Embankment Slide

Condition: No defects were found

Compliance: Complies with BS EN 1176

Surfacing: Grass Mats

Surface Condition: Satisfactory

Surface Compliance: Meets the dimensional requirements of BS EN1176

Very Low Risk: 2



3. Ledon Spring Bike

Condition: No defects were found

Compliance: Fails BS EN 1176-6, Sec. 4.6, foot rests fail gauge test

Surfacing: Tiles & Grass

Surface Condition: Satisfactory

Surface Compliance: Meets the dimensional requirements of BS EN 1176

Very Low Risk: 3



4. Playdale 1.75m 1 Bay Swing with 2 Cradle Seats

Condition: No defects were found

Compliance: Complies with BS EN 1176

Surfacing: Green Fleck Wet Pour with Inserts

Surface Condition: Satisfactory

Surface Compliance: Meets the dimensional requirements of BS EN 1176

Very Low Risk: 2



OLD ROAD

5. Playdale Toddler Multi Unit

Condition: Replace several broken bolt cover caps

Compliance: Complies with BS EN 1176

Surfacing: Green Fleck Wet Pour with Inserts

Surface Condition: Satisfactory

Surface Compliance: Meets the dimensional requirements of BS EN 1176

Low Risk: 4



(Broken bolt cover cap)



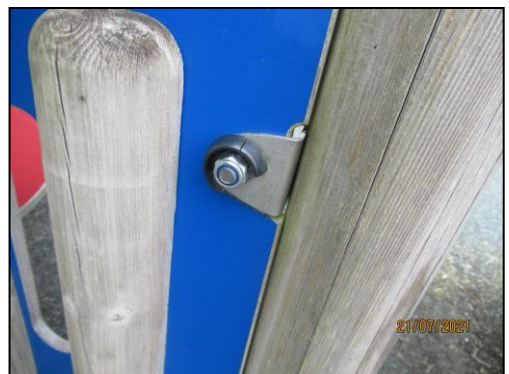
(Broken bolt cover cap)



(Broken bolt cover cap)



(Broken bolt cover cap)



(Broken bolt cover cap)

OLD ROAD

6. Richter Cantilever Swing

Condition: Beam damaged – monitor
One support showing signs of rotting – monitor

Compliance: Complies with BS EN 1176

Surfacing: Green Fleck Wet Pour

Surface Condition: Repair 200mm² x 60mm deep

Surface Compliance: Meets the dimensional requirements of BS EN 1176

Low Risk: 5



(Damaged wet pour)

7. Richter 2.75m 1 Bay Swing with 2 Flat Seats

Condition: Splits in logs – monitor
End links on chains showing signs of wear – monitor
Replace one rotten support

Compliance: Complies with BS EN 1176

Surfacing: Black Wet Pour

Surface Condition: Repair 200mm² x 10mm deep

Surface Compliance: Meets the dimensional requirements of BS EN1176

Low Risk: 6



(Rotten support)



(Location of rotten support)

OLD ROAD

7. Richter 2.75m 1 Bay Swing with 2 Flat Seats (continued)



(Worn wet pour)

8. Richter Log Climber

Condition: Splits in logs – monitor

Compliance: Complies with BS EN 1176

Surfacing: Grass

Surface Condition: Satisfactory

Surface Compliance: Meets the requirements of BS EN 1176

Low Risk: 4



9. Unknown Make Ball Chute

Condition: No defects were found

Compliance: Fails BS EN 15312, Sec. 4.3, remove excess bolt thread

Surfacing: Artificial Turf

Surface Condition: Satisfactory

Medium Risk: 10



(Excess bolt thread)

OLD ROAD

10. Sure Shot Basketball

Condition: No defects were found

Compliance: Complies with BS EN 15312

Surfacing: Artificial Turf

Surface Condition: Satisfactory

Medium Risk: 8



11. Unknown Make Target Panel

Condition: No defects were found

Compliance: Fails BS EN 15312, Sec. 4.4.2.1, neck & head traps present

Surfacing: Artificial Turf

Surface Condition: Repair 200mm²

Medium Risk: 12



(Potential neck trap)



(Potential neck trap)



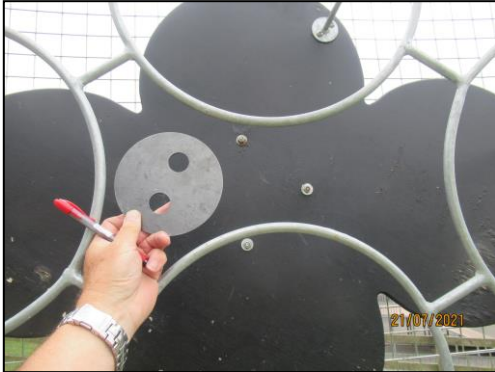
(Potential neck trap)



(Potential neck trap)

OLD ROAD

11. Unknown Make Target Panel (continued)



(Potential head trap)



(Potential head trap)



(Damaged artificial turf)

12. Playdale Log & Net Climber

Condition: No defects were found

Compliance: Complies with BS EN 1176

Surfacing: Wood Chippings

Surface Condition: Require top up (actually 130mm deep, should be at least 300mm)

Replace 4m missing wood chipping retaining logs

Surface Compliance: Meets the dimensional requirements of BS EN 1176

Low Risk: 6



(Insufficient depth wood chippings)



(Missing wood chipping retaining logs)

OLD ROAD

13. Playdale Trim Trail

Condition: Wobble log showing signs of rotting – monitor

Replace two rotten step posts

Compliance: Complies with BS EN 1176

Surfacing: Grass

Surface Condition: Satisfactory

Surface Compliance: Meets the requirements of BS EN 1176

Low Risk: 4



(Rotten step post)



(Location of rotten step post)



(Rotten step post)



(Location of rotten step post)

OLD ROAD

14. Eight-item Skate Park

Condition: Slight damage to two liners on half pipe combi unit – monitor

Slight damage to one liner on driveway – monitor

Compliance: Fails BS EN 14974, Sec. 6.1.7, remove excess bolt thread at various locations on half pipe

High Risk: 14



(Excess bolt thread at half pipe)



(Excess bolt thread at half pipe)

Ancillary items/Comments:

Picnic Tables x three – satisfactory (**Very Low Risk**)

Seats x seven – satisfactory (**Very Low Risk**)

Litter Bins x five – satisfactory (**Very Low Risk**)

Signs – slight damage to two signs. Remove sign from gate (recommend signs are not put on gates) (**Low Risk**)

Fence (around items 2-5) c/w one pedestrian gate – potential neck trap between slats. Posts showing signs of rotting – monitor. Replace missing buffer on gate (**Low Risk**) Re-adjust self-closing device as gate closing too fast (closing in 3 seconds, should be at least 5 seconds) (**Medium Risk**)

Fence (around skate park) c/w 4 pedestrian gates – potential head trap between top two rails on fence & gates. Clearance of between 60mm & 110mm should be maintained at bottom of gates. Replace one missing gate stop. Re-set gates (catches missing stoppers at two gates) (**Low Risk**) Remove excess bolt thread. Replace one missing nut on bolt. Remove potential pinching/crushing hazard between gate & post at hinge side (a gap of at least 12mm should be maintained) (**Medium Risk**)

Only one pedestrian entrance around items 2-5 (**Medium Risk**)

Boundary wall fence not inspected

One pedestrian gate & one vehicular access gate to main area – remove potential pinching/crushing hazard at pedestrian gate (a gap of at least 12mm should be maintained) (**Medium Risk**)

Path satisfactory (**Very Low Risk**)

General area – remove one dead & loose tree. (**Low Risk**) Tidy

HIGH RISK SITE

OLD ROAD

Ancillary items/Comments (continued)



(Damaged sign)



(Damaged sign)



(Missing buffer on gate)



(Missing gate stop)



(Gate catch missing stopper)



(Gate catch missing stopper)



(Excess bolt thread at gate)



(Excess bolt thread at gate)

OLD ROAD

Ancillary items/Comments (continued)



(Missing nut on bolt at gate)



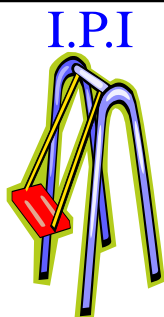
(Potential pinching/crushing hazard at gate at skate park)



(Potential pinching/crushing hazard at gate to main area)



(Dead & loose tree)



RYEDALE VIEW



Site address:-

**Ryedale View, Kirkbymoorside, York,
YO62 6EH**

Date of inspection:-

21/7/2021

Inspected by:

**Gary Watkinson
RPII Certificate No 1041A**



1. Kompan Junior Multi Unit

Condition: No defects were found

Compliance: Complies with BS EN 1176

Surfacing: Grass Mats

Surface Condition: Satisfactory

Surface Compliance: Meets the dimensional requirements of
BS EN1176

Low Risk: 7



2. Kompan Daisy Swing

Condition: No defects were found

Compliance: Complies with BS EN 1176

Surfacing: Grass Mats

Surface Condition: Satisfactory

Surface Compliance: Meets the dimensional requirements of
BS EN1176

Low Risk: 4



RYEDALE VIEW

3. Kompan Multi Climbing Frame

Condition: No defects were found

Compliance: Fails BS EN 1176-1, Sec. 4.2.7.6, finger trap between top of climbing wall & platform

Surfacing: Grass Mats

Surface Condition: Satisfactory

Surface Compliance: Meets the dimensional requirements of BS EN1176

Low Risk: 7



4. Kompan Pirouette

Condition: No defects were found

Compliance: Complies with BS EN 1176

Surfacing: Grass Mats

Surface Condition: Satisfactory

Surface Compliance: Meets the dimensional requirements of BS EN 1176

Low Risk: 4



5. Kompan Spinning Bowl

Condition: No defects were found

Compliance: Complies with BS EN 1176

Surfacing: Grass Mats

Surface Condition: Satisfactory

Surface Compliance: Meets the dimensional requirements of BS EN 1176

Very Low Risk: 2



6. Kompan 2.4m 1 Bay Swing with 2 Flat Seats

Condition: No defects were found

Compliance: Complies with BS EN 1176

Surfacing: Grass Mats

Surface Condition: Grass worn (impact attenuating properties impaired if not well maintained) – requires attention

Surface Compliance: Meets the dimensional requirements of BS EN 1176

Low Risk: 6



RYEDALE VIEW

7. Bespoke Woodland Walk consisting of:

a) Post

Condition: Not ideally positioned beneath tree



b) Information Panel

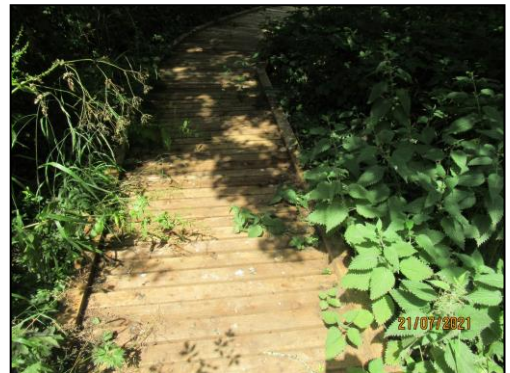
Condition: Not ideally positioned beneath tree



c) Board Walk

Condition: Not ideally positioned beneath tree

Very Low Risk: 2 (items a-c)



RYEDALE VIEW

Ancillary items/Comments:

Picnic Tables x two – satisfactory (**Very Low Risk**)

Seat x one – satisfactory (**Very Low Risk**)

Litter Bins x two – satisfactory (**Very Low Risk**)

Signs – satisfactory (**Very Low Risk**)

No fence provided

Path satisfactory (**Very Low Risk**)

General area – **cut back shrubs at woodland walk. (Low Risk)** Tidy

LOW RISK SITE



(Overgrown shrubs at woodland walk)



I.P.I.

INDEPENDENT PLAYGROUND INSPECTIONS LIMITED

9 THE BAULK, WORKSOP, NOTTS, S81 0HU

TEL: 01909 484847

MOBILE: 07970 925898

EMAILS: gary.ipiplay@gmail.com

sue.ipiplay@gmail.com

11 August 2021

Joanne Miller
Streetscape (Products & Services) Ltd
Raleigh Works
Vivars Way
Canal Road
Selby
North Yorkshire
YO8 8BE

Dear Joanne

Please find enclosed the annual inspection and level of risk report for Kirkbymoorside Town Council's play areas at Old Road and Ryedale View.

A copy of the RPII inspection methodology is also enclosed.

When minor wear/damage has been identified, the recommended action is to monitor.

Maintenance issues that could be routinely rectified have been identified in red print to aid identification.

I trust that you will find the report satisfactory, but if you have any queries then please don't hesitate to contact me.

Yours sincerely

G Watkinson

Gary Watkinson
Playground Safety Consultant
Member of the Register of Play Inspectors International Ltd (RPII)